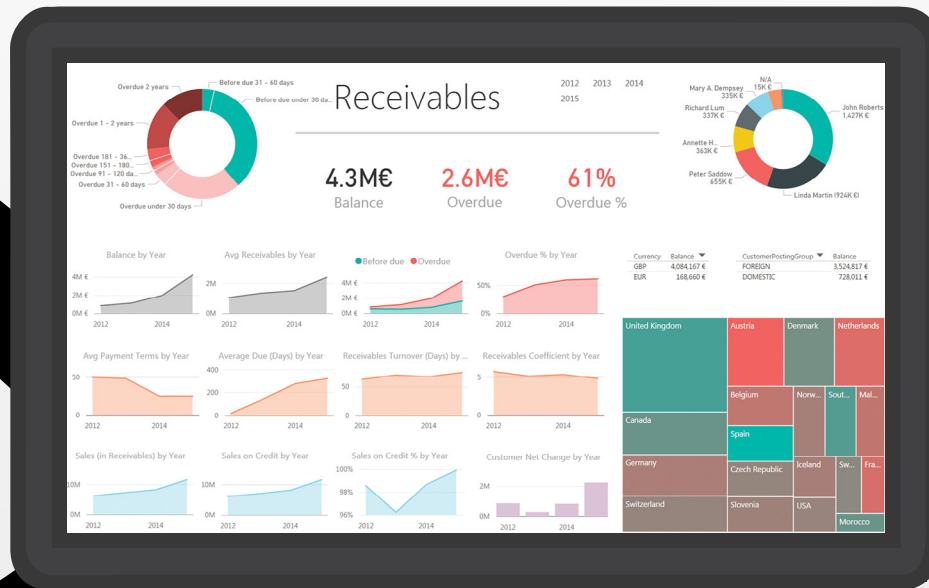


# BI SOLUTION FOR MICROSOFT DYNAMICS

- 1 DATA WAREHOUSE
- 2 CUSTOMIZATION WIZARD
- 3 POWER BI



## » TRUE DATA WAREHOUSE

### Built for content and performance.

BI4Dynamics is built to access the full potential of data warehouse architecture. With a rich content that is exclusively designed for Microsoft Dynamics AX & NAV.

### All-Inclusive content.

At least 30% more content than the competitors, with regards to number of cubes, measures and dimensions. BI4Dynamics covers all Microsoft Dynamics AX & NAV application areas.

### Fully adaptable to your environment.

BI4Dynamics uses Microsoft stack and can be installed on Express, Standard or Enterprise version of SQL Server. It supports Microsoft Dynamics AX from v 3 upwards, as well as Microsoft Dynamics NAV from v 3.1. to the current version.

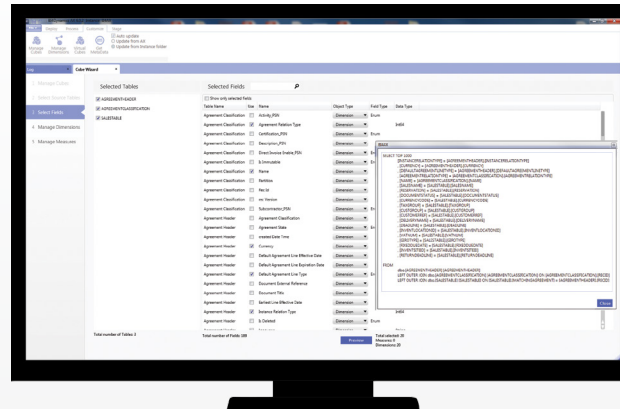
### Effortless customization.

The BI4Dynamics Wizard enables installation and customization with a click of a mouse, with the possibility of further manual customization using Microsoft SQL knowledge.

## » CUSTOMIZATION WIZARD

### Build new or modify existing BI solution.

BI4Dynamics Wizard enables creating new cubes, dimension, measures or complete vertical solutions without SQL coding. The Wizard is totally compatible with Microsoft BI tools.



### Data warehouse automation.

Based on Microsoft Dynamics metadata wizard simplifies development process by automatically generating the SQL code. Embedding manual SQL code into automatically generated SQL scripts is very easy.

### Merge two or more cubes.

The Wizard enables merging two or more cubes (i.e. Logistics cube from Sales, Purchase, Inventory) into one Virtual cube to support your analysis. In this case you can analyze all measures from item dimension.

## » PERFECTLY MATCHED WITH POWER BI

### BI4Dynamics develops and transforms data.

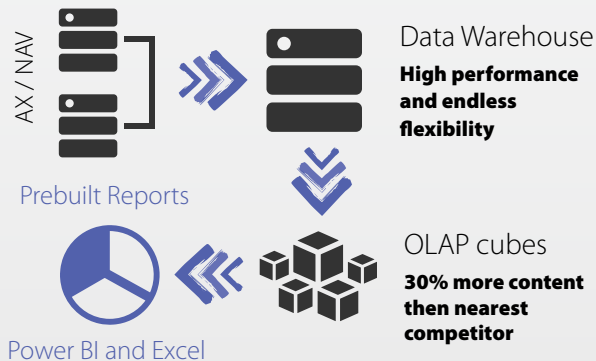
BI4Dynamics delivers over 2.000 BI expressions for NAV and over 3.000 for AX out-of-the-box. This leading BI content in ready-to-use as a foundation for building your BI specifics.

### Power BI for further modelling.

Power BI extends the usage of BI4Dynamics Data Warehouse and OLAP cubes, by simply integrating additional sources directly into Power BI.

### Mobile and web reports.

To facilitate quick analyses of your data, we created a set of predefined Power BI reports and dashboards based on BI4Dynamics data warehouse.



Check more on: [www.bi4dynamics.com/cube-wizard](http://www.bi4dynamics.com/cube-wizard)

Check more on: [www.bi4dynamics.com/power-bi](http://www.bi4dynamics.com/power-bi)