

New Release Brings Effortless ACY Analysis, Adding MDX Measures, Filtering Stage Data by Company

BI4DYNAMICS NAV 5.4

This release enhances international business intelligence by adding 64 measures in additional currency and offers a whole new set of Excel ACY reports for the standard areas (S, P, AR, AP, I, GL) based on Additional Currency.

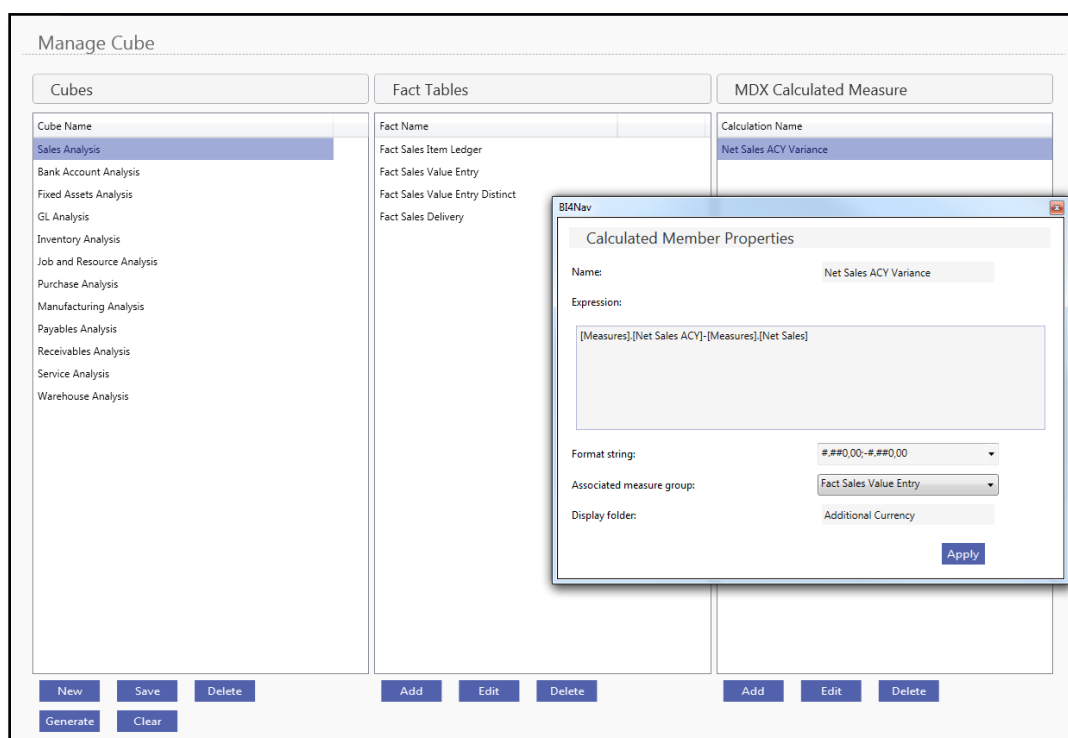
[Check our new web page to download the installation package along with the documentation.](#)
[Watch the new videos to see how you can use our new features.](#)

FRAMEWORK

- ✓ Added support to **filter Stage data by company**
NAV upgrade requires merging old and new data from NAV companies. To this end, a company filter for closing balances (i.e. receivables) prevents duplicate from an old NAV company, because, the same value is brought forward as an opening balance in a new NAV company.
Users can filter Stage data by any transactional data (f.e. values, items, etc.). To get an idea how filtering can be done in BI4Dynamics we recorded a [VIDEO](#).

WIZARD

- ✓ Added **custom MDX measures** to standard cubes -> [VIDEO](#).



CONTENT

✓ Added **attributes to dimensions**

- **Company:**
CompanyID (used to filter Stage), Data Source ID, Data Source Server Name, Data Source Database Name
- **Document Customer:**
External Document Number, Due Date, Closed at Date, On Hold, Open, Due Days
- **Document Vendor:**
External Document Number, Due Date, Closed at Date, On Hold, Open, Due Days
- **Document GL:**
External Document Number, Document Date, General Posting Type

✓ Added **attribute Company ID** to dimensions: ->[VIDEO](#).
Customer, Vendor, Item, GL Account, Location, Salesperson-purchaser;

In BI4Dynamics Data Warehouse, most dimension entries have an attribute CompanyID that defines which company the record was created for. If a record (i.e. Customer) has the same code and name in more companies, CompanyID is the attribute (identifier) that separates transactions by companies.

✓ Added **dimensions to GL cube:**

General Product Posting Group, General Business Posting Group, Source Code, Reason Code

✓ Added **64 ACY measures:**

- **Receivables cube (12 ACY measures):**
Sales On Credit ACY, Avg Receivables Payment Terms ACY, Avg Receivables ACY, Receivables Coefficient ACY, Receivables Turnover (Days) ACY, % Receivables Overdue ACY, % of Total Receivables Balance ACY, % of Total Sales ACY, Sales on Credit (%) ACY, Avg Overdue Days Receivables ACY, Avg Due Days Receivables ACY, Avg Open Days Receivables ACY
- **Payables cube (12 ACY measures):**
Purchase On Credit ACY, Avg Payables ACY, Payables Coefficient ACY, Payables Turnover (Days) ACY, % Payables Overdue ACY, % of Total Payables Balance ACY, % of Total Purchase ACY, Avg Payables Payment Terms ACY, Purchase On Credit (%) ACY, Avg Overdue Days Payables ACY, Avg Due Days Payables ACY, Avg Open Days Payables ACY.
- **Sales cube (17 ACY measures):**
Avg Sales Price ACY, Avg Sales Cost ACY, Avg Sales Profit ACY, Net Sales ACY/Budget Index, Net Sales ACY/Budget YTD Index, Sales Budget Cost Amount ACY, Sales Budget Sales, Amount ACY, Sales Budget Amount YTD ACY, Sales Budget Variance ACY, Sales Budget Variance YTD ACY, Sales Discount % ACY, Net Sales Pop Index ACY, Net Sales YoY Index ACY, Profit ACY %, Profit % Expected ACY, Profit PoP Index ACY, Profit YoY Index ACY.
- **Inventory cube (10 ACY measures):**
Avg Price ACY, Avg Stock Price ACY, Opening Stock Value ACY, Stock Rotation Coefficient ACY, Inventory Cost Amount Consumption ACY, Inventory Cost Amount Negative Adjmt ACY, Inventory Cost Amount Output ACY, Inventory Cost Amount Positive Adjmt ACY, Inventory Cost Amount Sale ACY, Inventory Cost Amount Transfer ACY.

- **Purchase cube (2 ACY measures):**
Purchase Budget Cost Amount ACY, Avg Purchase Price ACY.
- **General Ledger cube (2 ACY measures):**
Net Change Last ACY, Opening Balance ACY
- **Sales cube (6 PCY - posted currency measures):**
Net Sales PCY, Gross Sales PCY, Cost PCY, Sales Discount Amount PCY, Profit PCY, Net Sales Expected PCY.
- **Purchase cube (3 PCY - posted currency measures):**
Cost Amount PCY, Cost Amount Expected PCY, Purchase Discount Amount PCY
- ✓ Added **measures to Sales Order measures group in Sales cube:**
 - Sales Order Cost Amount, Sales Order Profit, Sales Order Profit %.
- ✓ **Global dimension base attributes are available** also as a separate attribute (prior only as part of a hierarchy)

Visit our web page to find installation and customizations videos, documents, reports, etc.

<http://www.bi4dynamics.com/installation/>