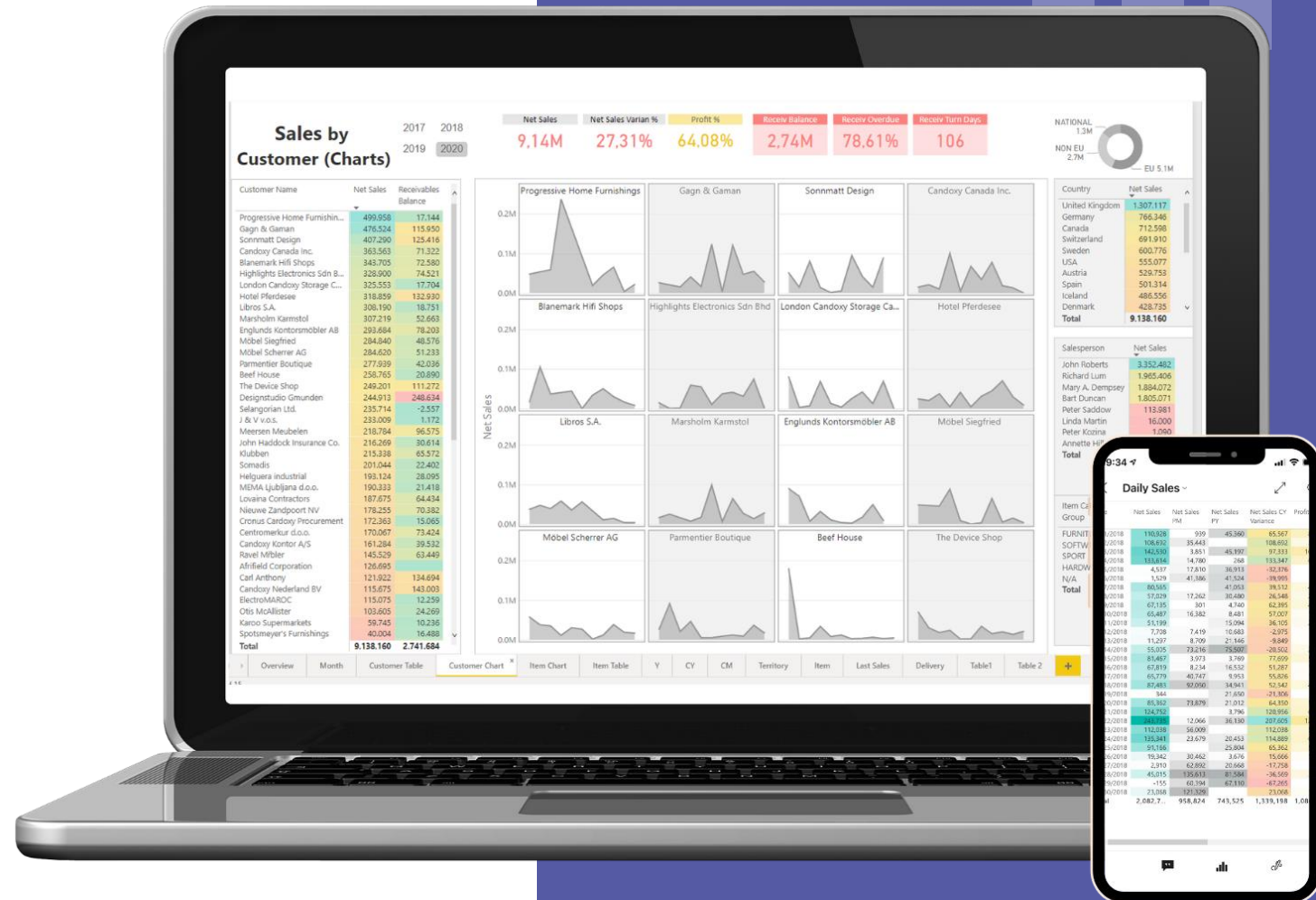


# BI4Dynamics

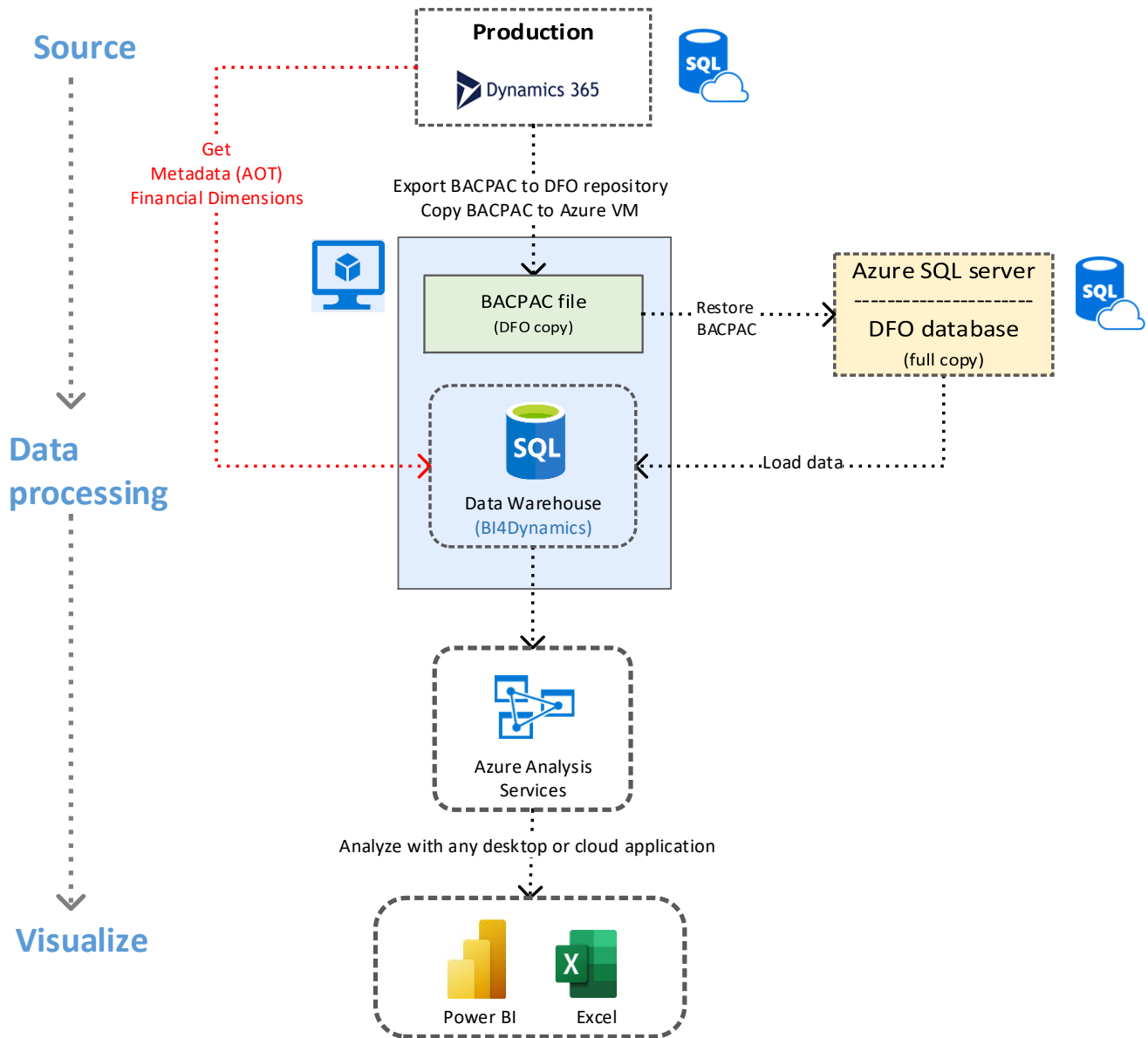
## D365 Finance and Operations

### POC Document includes:

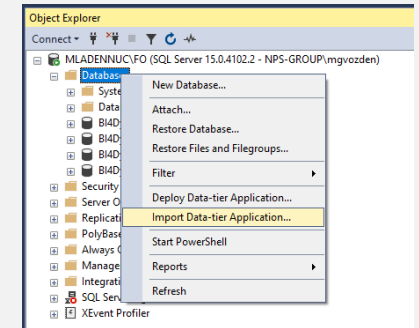
- System Requirements
- Architecture
- Installation
- Next Steps & After Installation



# POC with BACPAC option - Architecture



Implementation limitations:  
BACPAC can't be restored to Azure VM as Import Data-tier App, requires Azure SQL Server



Implementation options:

- **Analytics on VM**  
Login: windows login  
User access: through RDP or set Azure VM to company domain
- **Analytics in Azure**  
Login: Azure Active Directory  
User access: from anywhere  
Setup Start & End Schedule for daily availability (to lower cost)

# Document Downloads

## Download the following to prepare:

### On-Premise Deployment Documents:

 [System Requirements](#)

 [Installation Manual](#)

### Installation Files:

 [BI4Dynamics Installation](#)



All documents and resources are available on our website:  
<https://www.bi4dynamics.com/documents-for-bi4dynamics-fo-cloud-fo-on-premises-and-ax/>

# Azure Resources (without Azure VM)

## Typical installation

### Azure SQL server (storing DFO database)

There is usually enough disk space (250 GB) to store DFO database

Azure SQL server size options (DTU model):

- Idle time (used as storage): Standard Tier S1 or S2
- Working time (used for loading data to DW): Premium Tier P1 to P6 (0.6\$ to 5\$ per hour)

### Azure Analysis Services

Add Azure AD account for BI4Dynamics (no need for email) as contributor for  
Azure Resource Group

Size Options: B1, B2, S0, S1

Schedule access time: 20 day 10 hours daily

Azure SQL Server size and costs for storing DFO database:

	<a href="#">DTUs</a>	Included storage	Price for <a href="#">DTUs</a>
S0	10	250 GB	\$14.7187/month
S1	20	250 GB	\$29.4343/month
S2	50	250 GB	\$73.6084/month
S3	100	250 GB	\$147.1772/month

Azure Analysis services size and costs:

<https://azure.microsoft.com/en-us/pricing/details/analysis-services/>

# Installation

## What we need from you:

1. Who will lead the implementation on your end (primary contact if not you)?
2. Your Tenant ID number to open trial license.
3. Name of companies (if there are more than 1) you would like us to include in BI4Dynamics?
4. Which global dimensions are in use?
5. Is there an additional currency used for reporting (in the case of companies using different posting currencies)?



# Installation

## Your requirements (add to be included):

Listed companies and dimension to be included:

FO companies:	
Financial dimensions:	

Business areas marked as:  
1 (very important), 2 (important), 3 (interested)

Area	Important
Fixed Assets	
GL Analysis	
Inventory Analysis	
Payables Analysis	
Production Analysis	
Project Analysis	
Purchase Analysis	
Receivables Analysis	
Sales Analysis	
Shop Floor Control	
Retail	

# What's Next?

## **Customizations to Power BI dashboards**

After the initial installation is done, we will connect Power BI dashboards and do some small customizations to Power BI dashboards to better reflect your business.

## **Walk-through data sessions (2x, 2h each)**

Then we can plan a walk-through data session for end-users where we will show BI4Dynamics in action. Your team will see our predefined Power BI dashboards connected to your data. Included in your POC is two 2-hour walk through sessions and discussions.

We like to schedule these at week #1 and week #3 – dates?



---

# AND AFTER YOUR TRIAL...

After 30 days of exploring your data and have the full running version of BI4Dynamics, you can decide if BI4Dynamics is the right fit for your business.



We verify that everything is in place to keep your data connected seamlessly



We provide a full or half-day workshop for your technical team if customizations are needed



Customizations for Power BI dashboards & end-user training in Power BI/Excel as needed.



We are here as your partner all along the way!



# After the POC

- We (or you) reinstall (if needed) BI4Dynamics and configure the ideal environment for BI4Dynamics with the data validation process.
- If the POC process reveals specific customizations / additional development, we can discuss and plan those needs and services based on project scope.
- We provide end-user training as part of the implementation process.
- We support your efforts and answer your support and sales related questions

