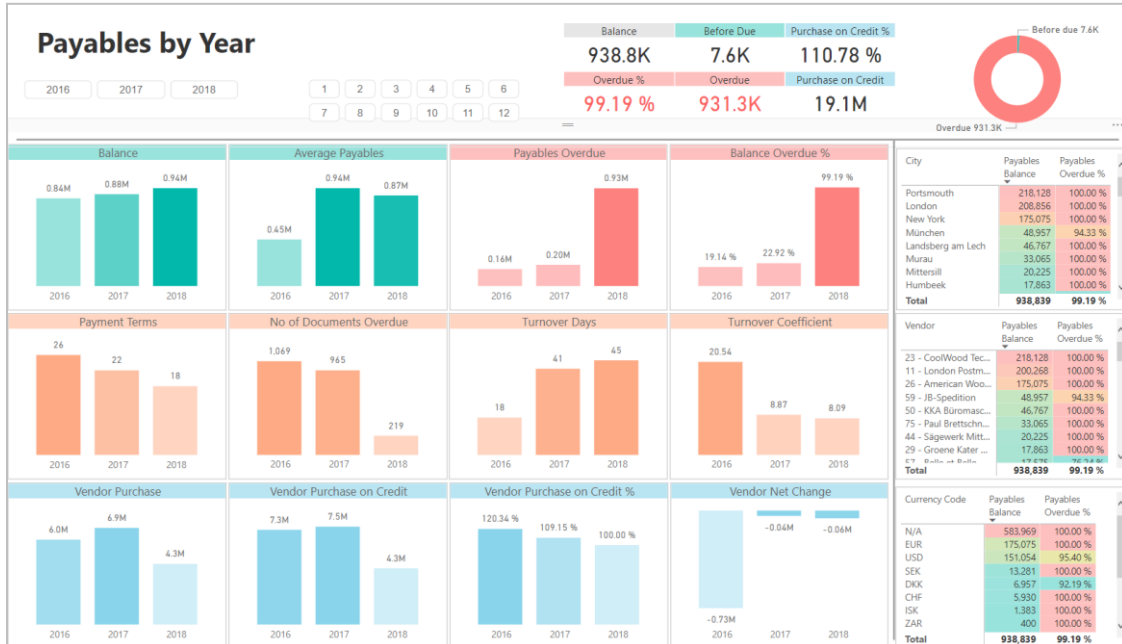
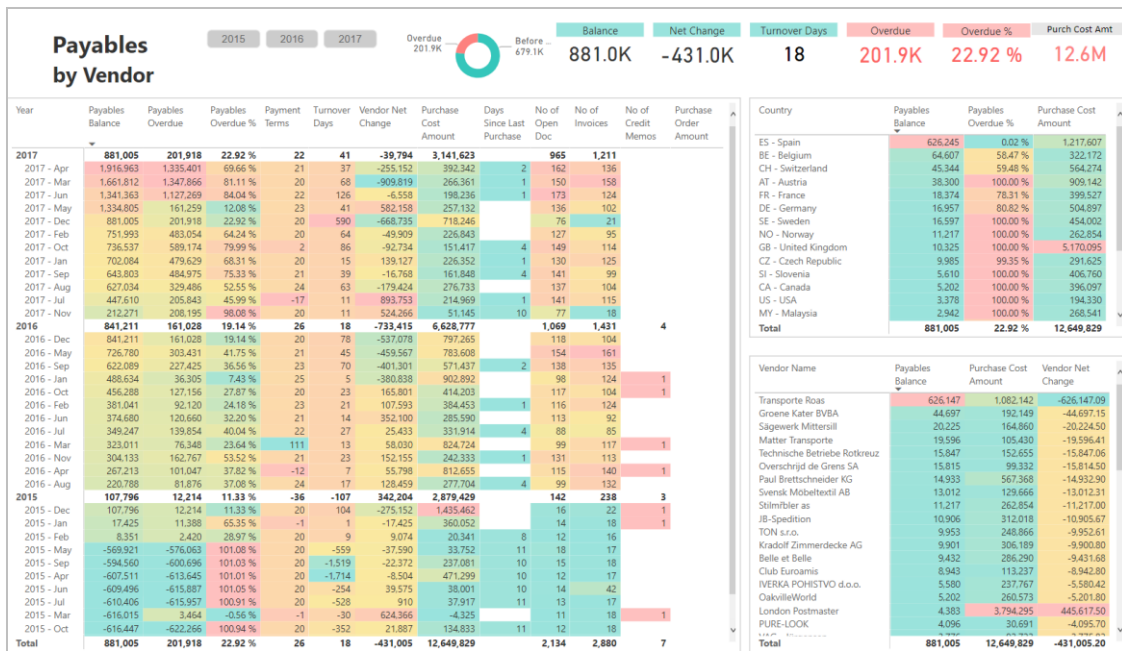


PAYABLES ANALYSIS

Payables cube comes with **40 measures** organized in two measure groups:

- Payables State** - to analyze vendor payment habits (Payment Term / Open / Overdue Days – all measures **calculated as weighted averages**), Days Payables Outstanding and Payable Coefficient. Balances are calculated daily for every open document, with the option to compress on a weekly or monthly level for prior periods (to gain performance and save disk space).
- Vendor Analysis** - to get insight into vendor transactions with specific measures Purchase on Credit as amount and percentage).

Measure groups are sharing **9 dimensions** with **125 attributes** in **20 hierarchies**.



COMMON DIMENSIONS

- Buy From Vendor
- Currency
- Date
- Document Vendor
- Pay To Vendor
- Salesperson Purchaser
- Vendor Posting Group

Payables Transactions

DIMENSIONS

- Document Inventory
- Due Date

MEASURES

- % of Total Vendor Purchase + ACY
- Payables Payment Terms + ACY
- Vendor Credit + ACY + PCY
- Vendor Debit + ACY + PCY
- Vendor Discount +ACy
- Vendor Net Change + ACY + PCY
- Vendor Purchase + ACY
- Vendor Purchase on Credit + % + ACY + ACY %

Payables State

DIMENSIONS

- Due Analysis

MEASURES

- % of Total Payables Balance
- % of Total Payables Balance ACY
- Average Payables
- Average Payables ACY
- No of Documents Payables State
- Payables Balance
- Payables Balance ACY
- Payables Balance PCY
- Payables Before Due
- Payables Before Due ACY
- Payables Due Days
- Payables Due Days ACY
- Payables Open Days
- Payables Open Days ACY
- Payables Overdue
- Payables Overdue %
- Payables Overdue ACY
- Payables Overdue ACY %
- Payables Overdue Days
- Payables Overdue Days ACY
- Payables Turnover Coefficient
- Payables Turnover Coefficient ACY
- Payables Turnover Days
- Payables Turnover Days ACY