

Changing Trial Reports Connection

Last update: January, 215

1. CONECTING TO BI4DYNAMICS DATA BASE

1.1. Changing connection

1. **Download** and **Open** Prebuilt reports
2. Click **Data > Connections > Properties > Definition**
3. Type the **database name** to the **Initial Catalogue** property of the **Connection string**.
Type the **server name** to the **Data Source** property of the **Connection string**.

The screenshot displays the Microsoft Excel interface with the 'Data' tab selected. Two dialog boxes are open over the spreadsheet:

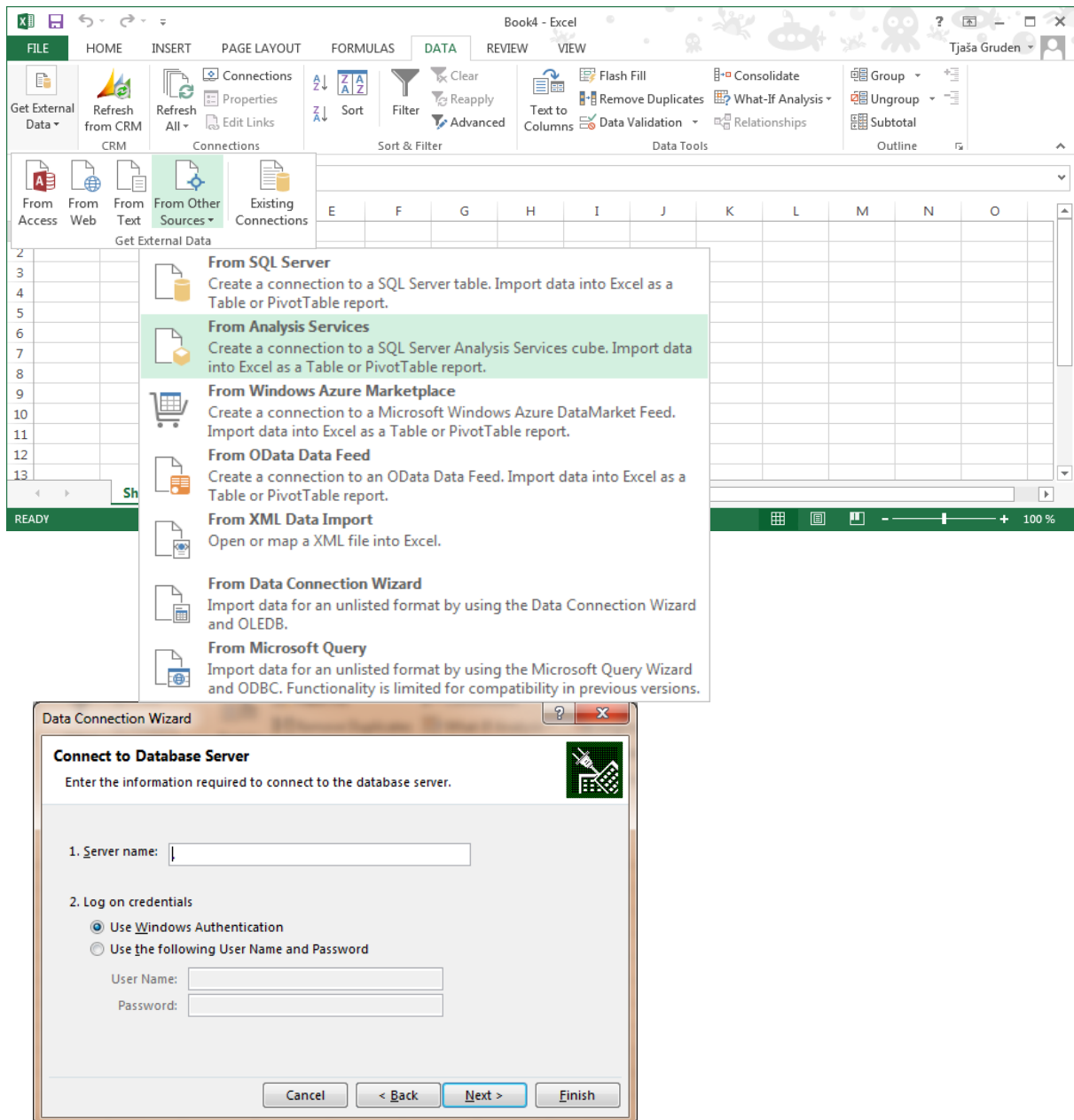
- Workbook Connections:** A table with the following data:

Name	Description	Last Refreshed
Receivables Analysis		16.8.2013 15:41:26
- Connection Properties:** The 'Definition' tab is active. The 'Connection string' field contains: `Provider=MSOLAP.3;Integrated Security=SSPI;Persist Security Info=True;Initial Catalog=BI4NAV;Data Source=localhost;Mdx Compatibility=1;Safety Options=2;Mdx Missing Member Mode=Error`. The 'Initial Catalog' and 'Data Source' parts are highlighted with red boxes.

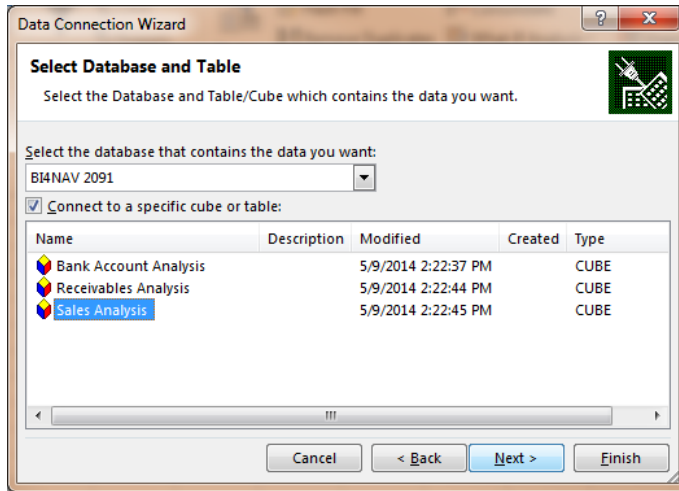
The background spreadsheet shows two charts: 'Receivables' (a bar chart for years 2010 and 2011) and 'Sales' (a bar chart for years 2010 through 2013).

1.2. Making a new connection

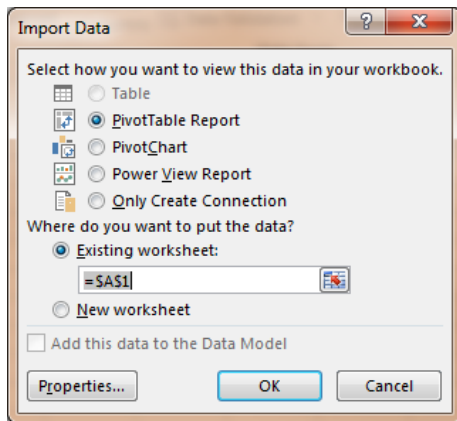
1. **Open** Microsoft Excel
2. Click **Data > Get External Data > From other Data Source > From Analysis Services**.
3. Insert a server name. If local server make ".".



4. Click **Next**.
5. Select **Analysis database** from the dropdown menu and select **Application area** you wish to analyse.



6. If you wish edit a friendly name.
7. Click **Finish**.
8. Import data



9. Click **OK. Start exploring your data**

Row Labels	Avg Receivabl	Customer Net %	Receivables	Sales On Credit
2008	1.012.801,74	762.146,85	,17	6.053.834,29
2009	1.113.668,65	24.070,24	,31	6.770.320,55
2010	1.010.116,26	563.732,89	,38	7.915.596,64
2011	1.656.079,38	1.980.774,71	,43	11.393.663,21
2012	3.330.724,69		1,00	
2013	3.330.724,69		1,00	
2014	3.330.724,69		1,00	
Grand Total	3.330.724,69	3.330.724,69	100,00%	32.133.414,69